

Barkbusters

Barkbusters is a Registered Trade Mark of Rideworx Pty Ltd

Thank you for purchasing this quality Australian made product

We have spent countless hours of design work and testing to ensure you receive the highest quality product on the market. We have integrated strong aluminium with a stylish replaceable plastic to give you a truly functional handguard. Combined with our easy fit mounting system you will find this product the easiest of any handguard to fit. Enjoy your riding with style.

Please read all instructions thoroughly before installation. Failure to follow all installation instructions completely will void any manufacturer's warranty implied or otherwise. The manufacturer will not be held responsible for problems derived from improper installation or improper usage.

Installation Procedure

1. With a sharp knife cut a hole in the end of the left and right handgrips. The hole size should be neat and no smaller than the inside diameter of the throttle tube, retaining the outside lip of the handgrip.

2. Loosen the throttle assembly to move it outward about 20mm. Roll back the end of the grip and use a hacksaw to carefully cut off the end cap of the plastic throttle tube. Do not remove more than 3mm and take care not to cut the underlying handle bar. Before refitting check and remove any burrs that could restrict throttle movement.

3. Choose the correct size expander insert (2) for your particular handlebar.

Note: Tapered clamp sets are supplied with only the 14mm size expander insert.

Insert the 8mm outer handlebar mounting bolt (1) through the handguard (4), expander insert (2), fit the 8mm-cone nut (3) only finger tight. (See Diagram 1)

4. Fit the handguard with expander hardware installed into the end of the handlebar until fully engaged. With a 5mm allen key tighten the bolt only enough to hold the handguard in position.

5. Loosen your clutch perch, throttle assembly and front brake assembly if not already and any other necessary parts to position and align the handguards properly.

6. Loosely assemble the clamp (5) to the handlebar and the handguard (4). (See Diagram 2)

Note: For tapered clamps ANS, MAG & TAG there are rings machined into the inside of the clamp surface to assist you with a correct fit. The rings on both halves of the clamp should line up with each other and be positioned towards the centre of the bike on both the left and right side.

7. Position the handguard and controls until you are comfortable with the fit. Do not allow any part of the handguard to interfere with the controls. Tighten your controls to OEM specifications. Make sure the throttle tube and grip does not rub on the handguard. It is best to allow a 3mm working clearance between the end of the handgrip and the handguard.

Note: You may need to bring your controls inward to give proper clearance between the handguards and lever as well as the throttle end.

8. Important Clamp Fitting Procedure

The clamp bolts must be tightened in the following order. (See Diagram 3).

Tighten bolt (6) through the handguard (4) to the swivel section of clamp assembly (5).

Tighten bolt (7) to solidly lock the swivel section between the clamp assembly (5).

Tighten bolt (8) to secure the clamp assembly (5) firmly to the handlebar.

Note: The clamp is designed to allow the nut on bolt (7) to pull into the recessed hole. This eliminates the need for a wrench after the bolt starts to tighten.)

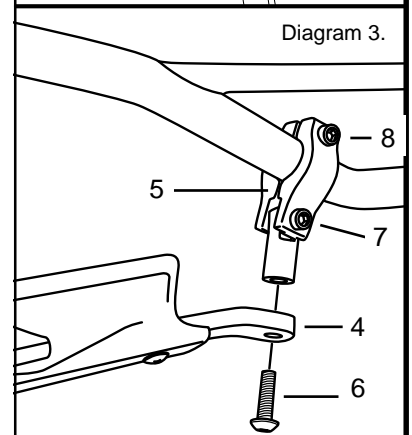
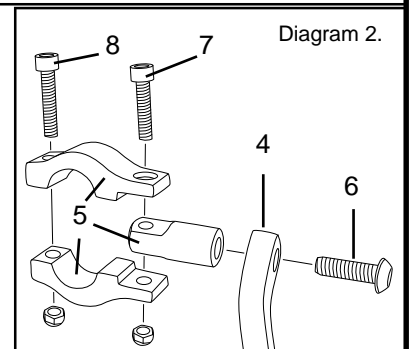
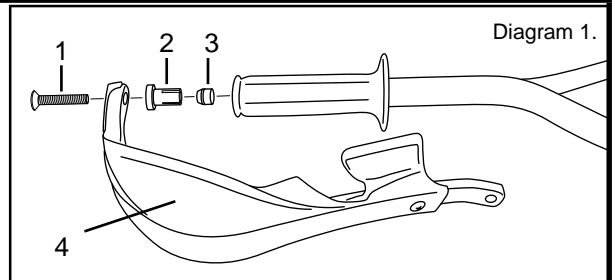
9. Finally tighten all handguard and control bolts.

Important: Check operation of all handlebar mounted controls specifically the throttle, front brake, kill switch and clutch to insure they are operating correctly and are in accordance with the OEM specifications. Do not operate the motorcycle if the throttle is sticking, not self closing or if any controls are not operating correctly. (Check periodically that all bolts are tight).

The following fitting kits and all spare parts are available from your motorcycle dealer.

BTC ANS	Acerbis PHS Evol, BMW 1200 GS, Pro Taper (USA made) & Reikon, Hi-Line
BTC MAG	Magura, KTM & Husaberg with Magura handlebars, Star Booster Bar & 2006 Gas Gas.
BTC TAG	Tag T2, Renthal Fat Bar, Pro Taper Contour, KTM with Renthal handlebars, Fly AERO, McFly, Fly mini bars, BMW HP2 & BMW 1200 GS Adventure
BTC VSB	Barkbusters VSB, Pazzaz, Renthal Twin Wall
BSC STD	22.2mm (7/8") Standard cross brace type handlebar mounting kit
TCM	Triple clamp mounting kit. Will fit bikes with "front or side top triple clamp pinch bolts". It will not fit Husaberg and KTM.

Warning: These handguards will not prevent injury in the event of an accident or crash. Follow all instructions when installing the handguards. Ensure all controls are free of the handguards each time you ride. Failure to follow the instructions or heed this warning could lead to loss of control of your motorcycle and/or accident, injury or death.



Rideworx Pty Ltd ABN 49 068 355 902

Phone: (61) 02 4271 8244

Email: info@barkbusters.net

www.barkbusters.net